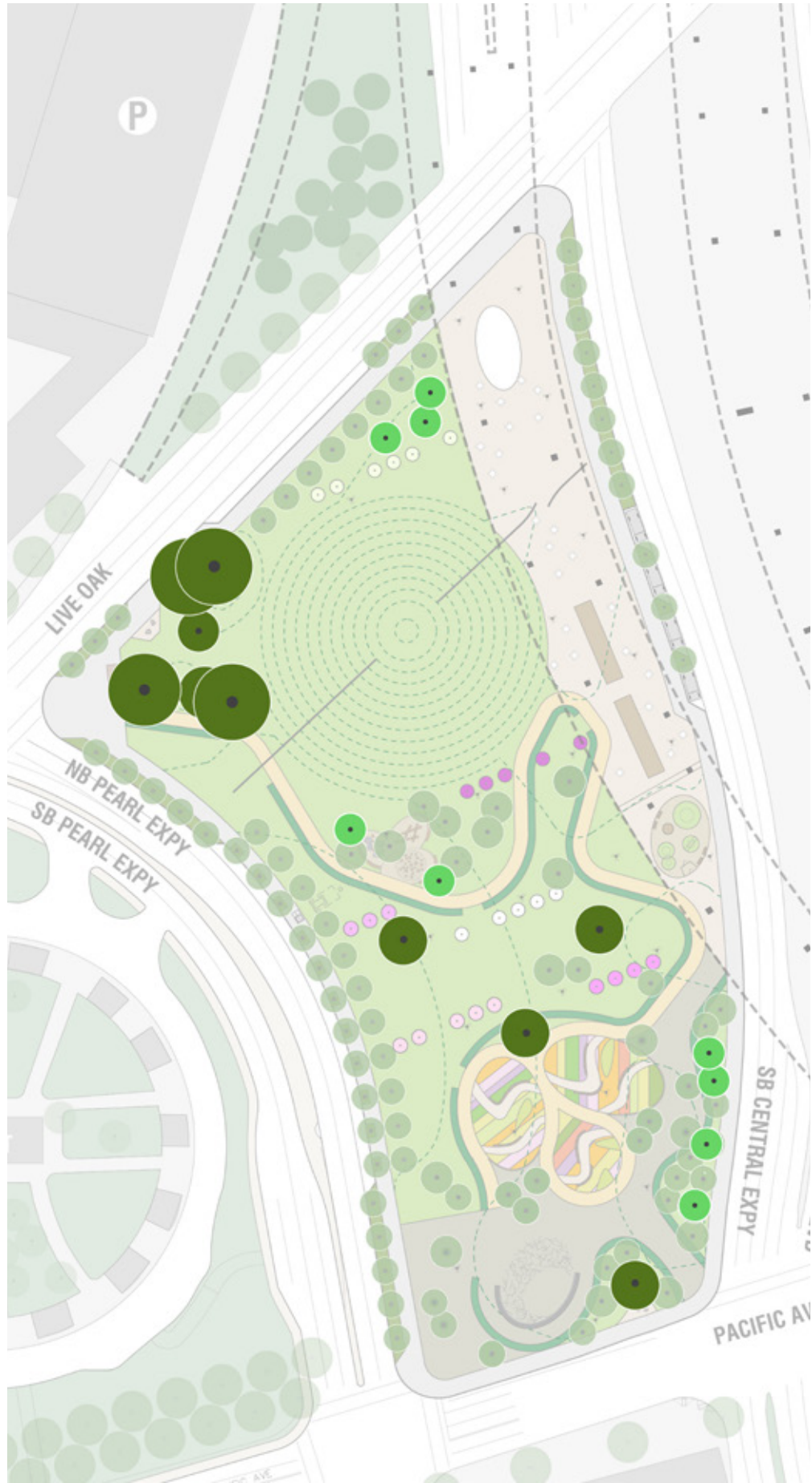


PLANTING



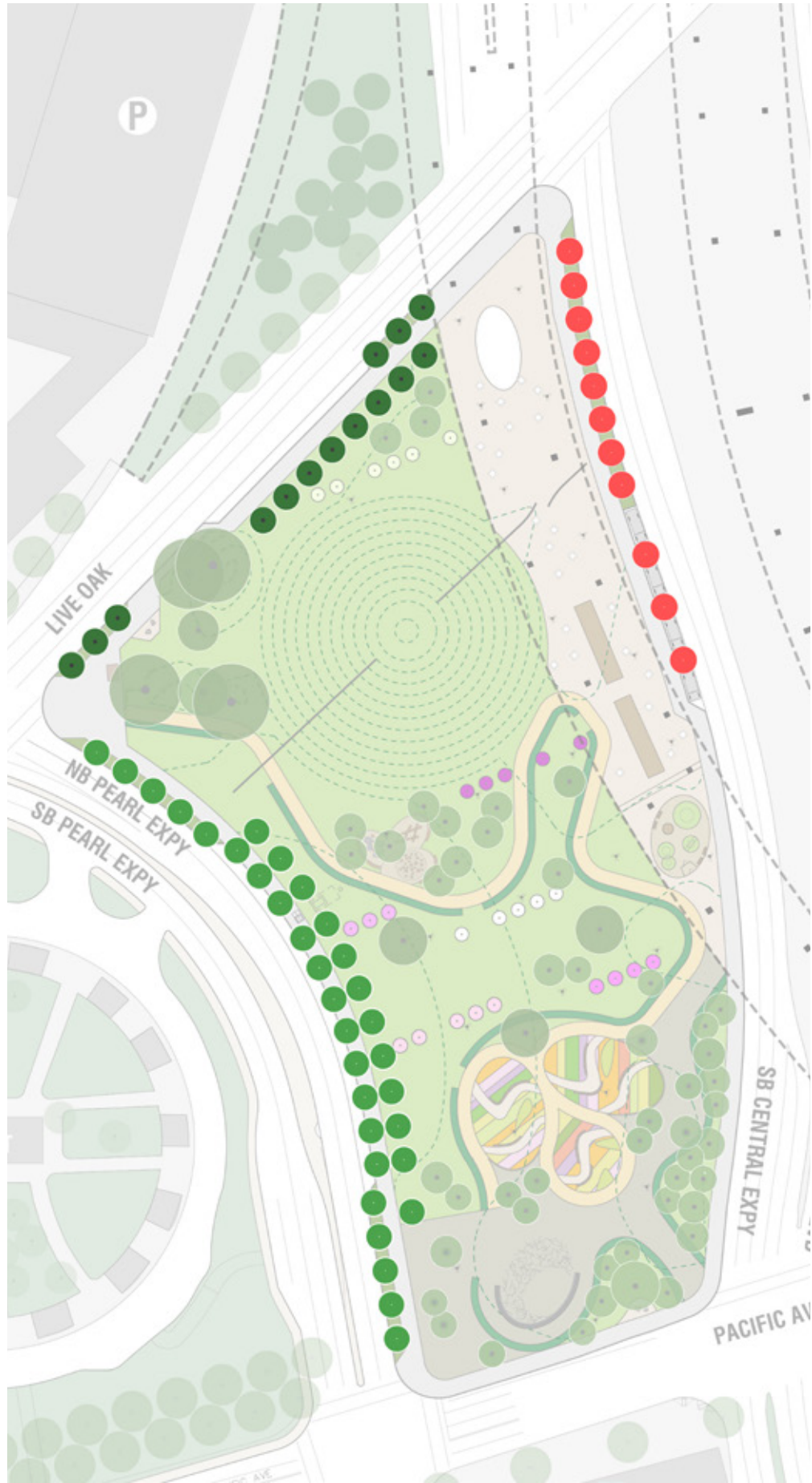
EXISTING, TRANSPLANT & LARGE TREES




Quercus virginiana
Live Oak
h: 40-80ft / w: 60-100ft




Taxodium distichum cv.
Bald Cypress
h: 80ft / w: 50ft f
all: rusty red-orange foliage



STREET TREES


Fraxinus pennsylvanica "Urbanite"
Urbanite Ash
 h: 40ft / w: 30ft
 fall: yellow-orange foliage




Ulmus parvifolia "Emer II"
Allee Lacebark Elm
 h: 50ft / w: 40ft
 fall: yellow foliage




Pistacia chinensis
Chinese Pistache
 h: 30ft / w: 25ft
 fall: red foliage





FLOWERING TREES



Cercis canadensis 'Texas White'
Texas White Redbud
h: 12-18ft / w: 15-20ft
spring: white bloom



Cercis canadensis var. *texensis*
Texas Redbud
h: 12-18ft / w: 15-20ft
spring: pink/purple bloom



Cercis canadensis var. *texensis* 'Oklahoma'
Texas Redbud
h: 12-18ft / w: 15-20ft
spring: pink/purple bloom



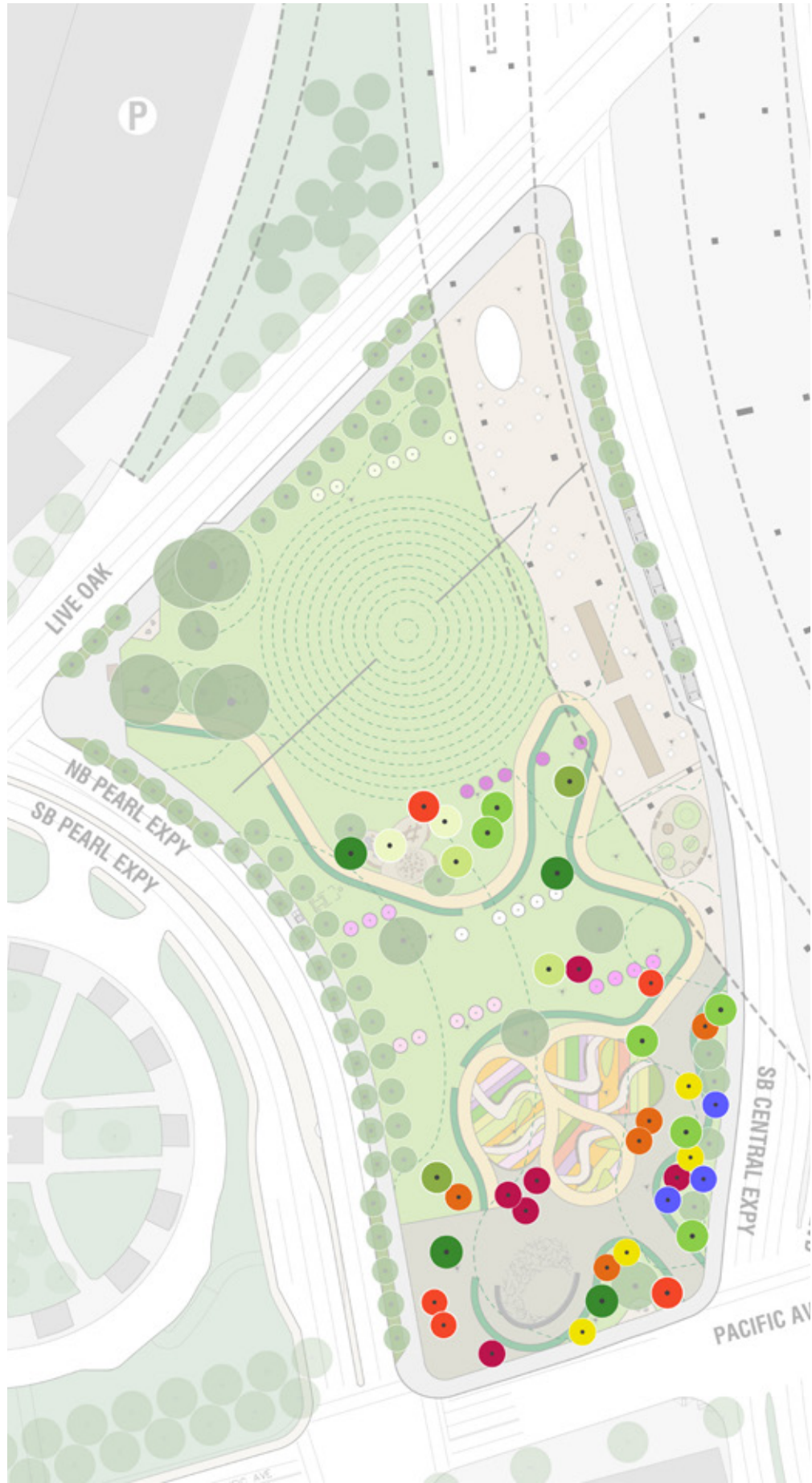
Cercis canadensis 'Flame'
Flame Eastern Redbud
h: 25ft / w: 15ft
spring: pink bloom



Prunus mexicana
Mexican Plum
h: 20ft / w: 20ft
spring: white bloom



Magnolia x soulangeana
Saucer Magnolia
h: 25ft / w: 25ft
spring: pink bloom



PARK TREES



• *Acer grandidentatum* **Bigtooth Maple**
h: 25ft / w: 25ft fall: red foliage



• *Koelreuteria paniculata* **Golden Rain Tree**
h: 30ft / w: 30ft spring: yellow bloom



• *Quercus macrocarpa* **Bur Oak**
h: 50ft / w: 50ft fall: red-orange foliage



• *Prosopis glandulosa* 'Maverick' **Thornless Honey Mesquite**
h: 35ft / w: 35ft spring: yellow bloom



• *Acer saccharum* 'Caddo' **Caddo Maple**
h: 50ft / w: 30ft fall: yellow-orange foliage



• *Magnolia grandiflora* cv. **Southern Magnolia**
h: 50ft / w: 30ft spring: white bloom



• *Quercus polymorpha* **Mexican White Oak**
h: 40ft / w: 30ft fall: red-orange foliage



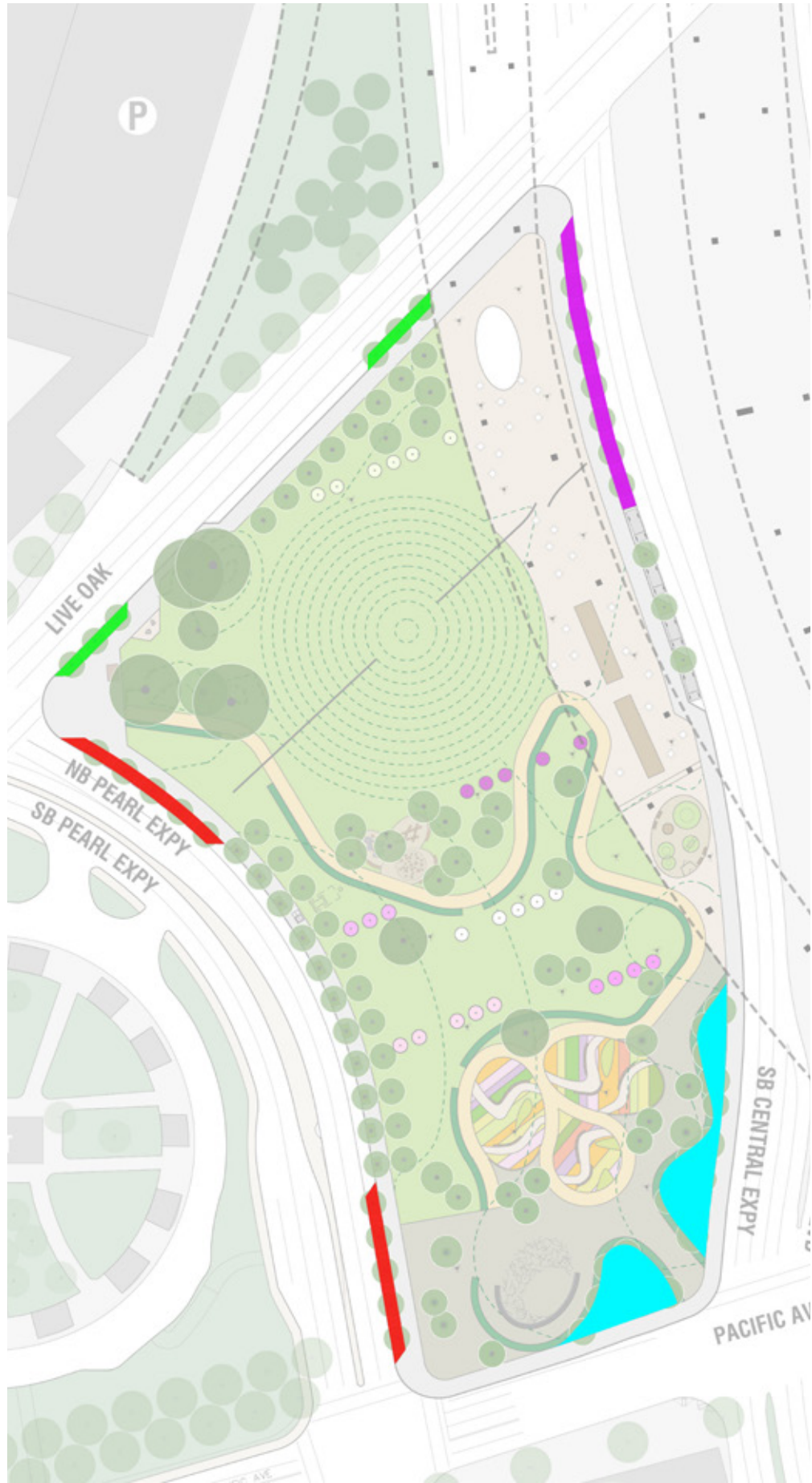
• *Acer truncatum* **Shantung Maple**
h: 25ft / w: 20ft fall: red foliage



• *Platanus mexicana* **Mexican Sycamore**
h: 50ft / w: 50ft fall: yellow foliage



• *Quercus shumardii* **Shumard Oak**
h: 40ft / w: 40ft fall: red foliage



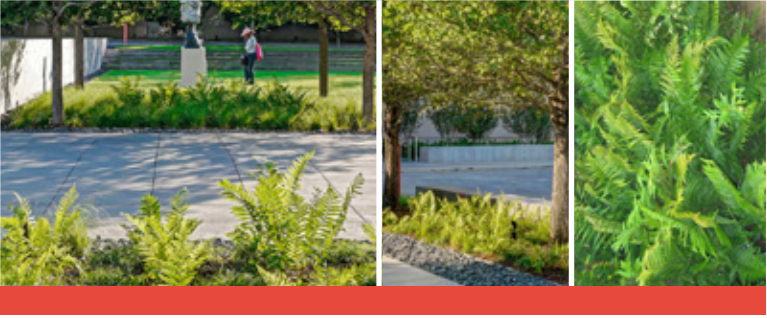
GROUNDCOVER & PLANTING STRIPS



Liriope muscari 'Evergreen Giant'
Evergreen Giant Lilyturf
 h: 12-24" / w: 12-24"
 flower: purple bloom in summer/fall foliage: dark green
 sun: full sun to shade water: low wildlife: none hardiness zone: 6-10



Carex cherokeensis
Cherokee Sedge
 h: 1-1.5ft / w: 1-1.5ft
 flower: seed heads in summer foliage: deep green to blonde green
 sun: full sun to full shade water: medium hardiness zone: 6-9



Dryopteris ludoviciana
Southern Wood Fern
 h: 3-4ft / w: 3-4ft
 flower: none foliage: green
 sun: part shade to shade water: low wildlife: winter forage hardiness zone: 5-10



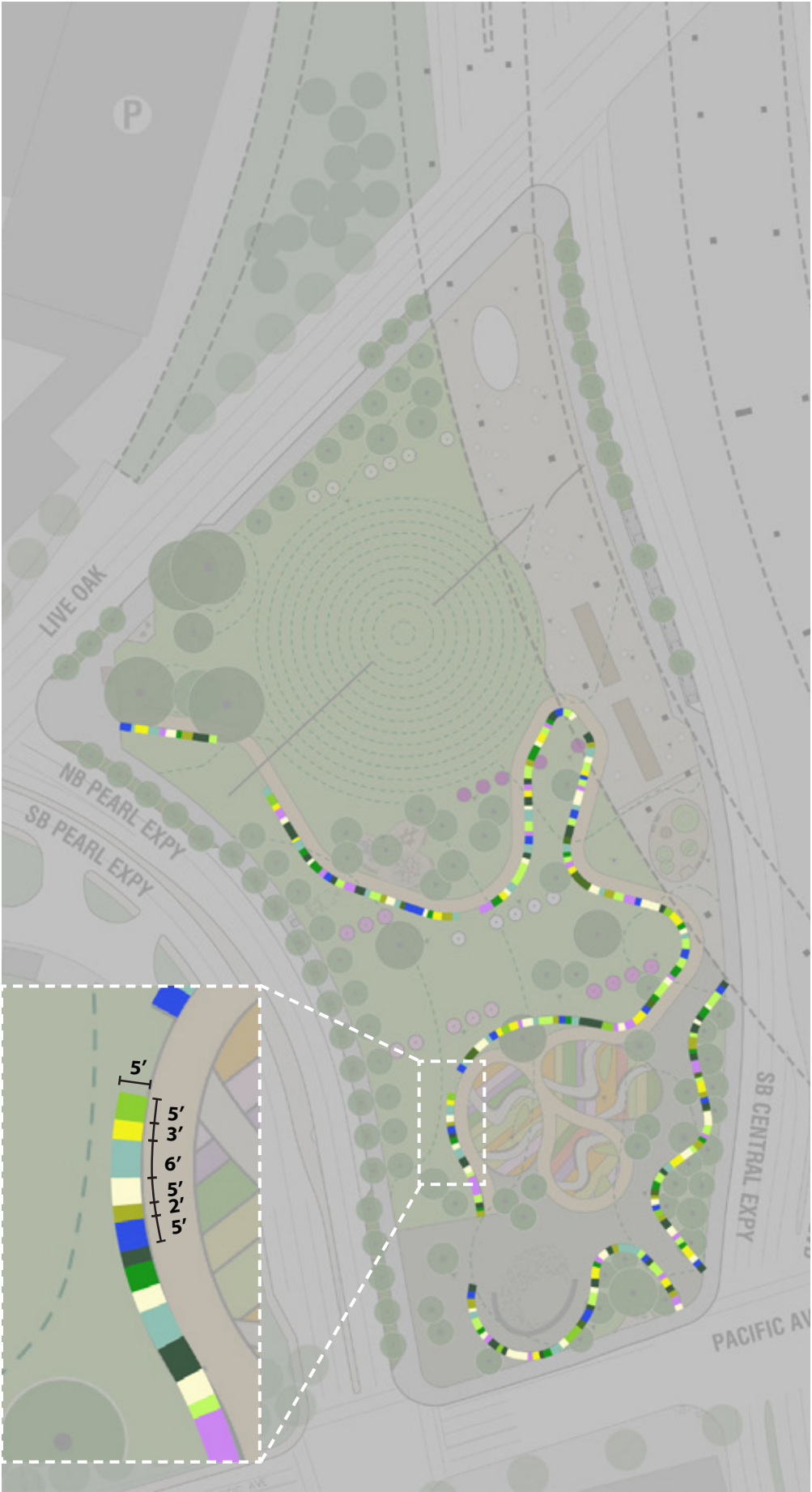
Ohiopogon japonicus
Mondo Grass
 h: 3-4" / w: 4-12"
 flower: small purple to white bloom in summer foliage: dark green
 sun: part shade to full shade water: low wildlife: none hardiness zone: 7-10



Carex divulsa
Berkeley Sedge
 h: 1-1.5ft / w: 2ft
 flower: seed heads in summer foliage: deep green
 sun: part sun to part shade water: dry to moist hardiness zone: 5-9



Chasmanthium latifolium
River Oats
 h: 2-5ft / w: 2-3ft
 flower: seed heads in summer foliage: green to bronze-brown
 sun: part shade to shade water: medium wildlife: winter forage hardiness zone: 3-8



HEDGES

FINE TEXTURE / FLOWERING / AROMATIC FOLIAGE

HEDGE - EVERGREEN + FLOWERING
SPRING
SUMMER / FALL



Rosmarinus officinalis 'Tuscan Blue'
Tuscan Blue Rosemary
h: 4ft / w: 2ft
flower: pale blue / spring



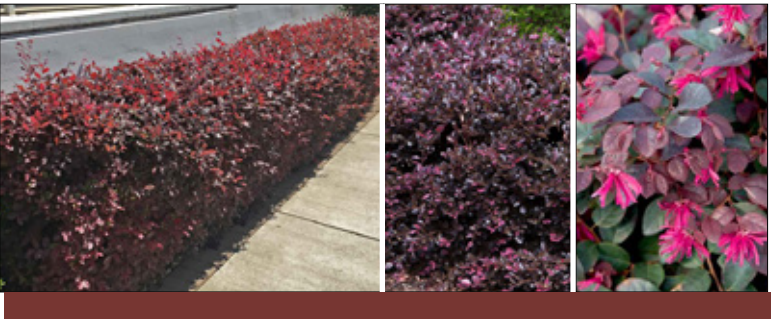
Teucrium fruticans
Bush Germander
h: 3-4ft / w: 3-4ft
flower: pale blue / summer - fall

MEDIUM TEXTURE / FLOWERING / FRAGRANT

SPRING



Loropetalum Emerald Snow
Emerald Snow Loropetalum
h: 4ft / w: 4ft
flower: white / march-april



Loropetalum Purple Diamond
Purple Diamond Loropetalum
h: 4-5ft / w: 4-5ft
flower: pink / march-april

SPRING / SUMMER / FALL

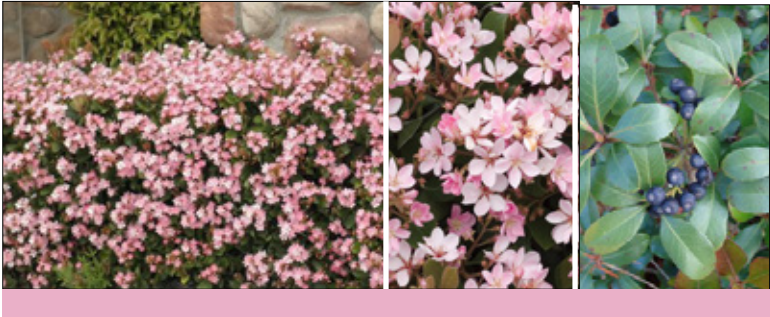


Leucophyllum frutescens 'Green Cloud'
Green Cloud Texas Sage
h: 6-8ft / w: 5-6ft
flower: rosy purple / spring - fall



Leucophyllum frutescens 'Silverado'
Silverado Texas Sage
h: 5ft / w: 5ft
flower: pale purple / spring - fall

SUMMER



Raphiolepis indica 'Pink Lady'
Pink Lady Indian Hawthorn
h: 4-6ft / w: 4-6ft
flower: pink / may-july / fragrant



Raphiolepis indica 'Indian Princess'
Elenor Tabor White Snow
h: 3-4ft / w: 3-4ft
flower: white / may-july / fragrant

HEDGE - EVERGREEN
WINTER

COARSE TEXTURE



Ilex cornuta 'Dwarf Burford'
Dwarf Burford Holly
h: 4-6ft / w: 4-6ft
berries: red



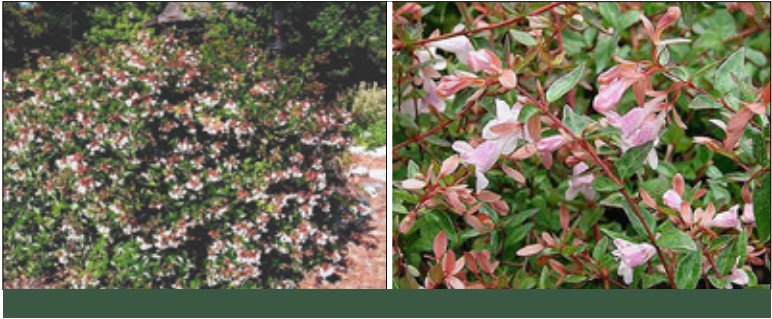
FLOWERING / FRAGRANT



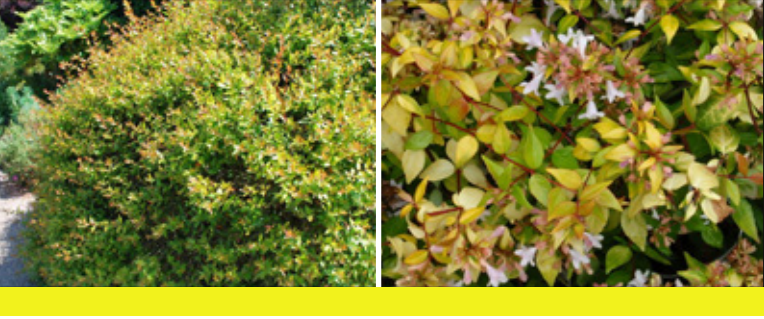
Caryopteris clandonensis
Blue Mist Spirea
h: 3-4ft / w: 4ft
flower: blue / summer-fall / fragrant

SUMMER / FALL

MEDIUM TEXTURE / FLOWERING / FRAGRANT/ GLOSSY FOLIAGE



Abelia grandiflora Edward Goucher
Glossy Abelia - Edward Goucher
h: 3-5ft / w: 3-4ft
flower: pink / may-sept



Abelia grandiflora Francis Mason
Glossy Abelia - Francis Mason
h: 3-5ft / w: 3-5ft
flower: pink / may-sept



Myrica cerifera Dons Dwarf
Dons Dwarf Southern Wax Myrtle
h: 3-5ft / w: 3-5ft
berries: grey

SUMMER / FALL



Hibiscus syriacus
Rose of Sharon - Pink / White / Purple
h: 6-8ft / w: 4-6ft
flower: pink / white / purple / july-sept / fragrant

PERENNIAL GRASSES

LARGE / COOL SEASON



Calamagrostis x acutiflora 'Karl Foerster'
Feather Reed Grass

MEDIUM / COOL SEASON



Deschampsia cespitosa 'Goldtau'
Tufted Hair Grass
h: 2-3ft / w: 2-3ft



Nasella tenuissima
Mexican Feather Grass
h: 1-2ft / w: 1-2ft

SMALL / COOL SEASON



Carex cherokeensis
Cherokee Sedge
h: 1-1.5ft / w: 1-1.5ft



Carex divulsa
Berkeley Sedge
h: 1-1.5ft / w: 2ft



Carex texensis
Texas Sedge
h: 1ft / w: 1ft

PERENNIAL GRASSES

LARGE / WARM SEASON



Andropogon gerardii 'Red October'
Big Blue Stem
h: 4-6ft / w: 2-3ft



Muhlenbergia capillaris 'White Cloud'
White Cloud Muhly Grass
h: 3-4ft / w: 3-4ft



Muhlenbergia lindheimeri
Lindheimer's Muhly Grass
h: 4-5ft / w: 3-4ft



Panicum virgatum 'Shenandoah'
Switch Grass
h: 3ft / w: 2-3ft



Schizachyrium scoparium 'Standing Ovation'
Little Bluestem
h: 2-4ft / w: 2ft



Sorghastrum nutans 'Sioux Blue'
Indian Grass
h: 3-5ft / w: 2-3ft

MEDIUM/ WARM SEASON



Bouteloua gracilis 'Blonde Ambition'
Blue Grama
h: 2-3ft / w: 2-3ft



Bouteloua curtipendula
Sideoats Grama
h: 2-3ft / w: 2-3ft



Muhlenbergia emersleyi 'El Toro'
Bull Grass
h: 2-3ft / w: 2-3ft



Sporobolus heterolepis
Prairie Dropseed
h: 2-3ft / w: 2-3ft

GARDENS - REVISED PLANT PALETTE

FLOWERING PERENNIALS

LARGE / DECIDUOUS



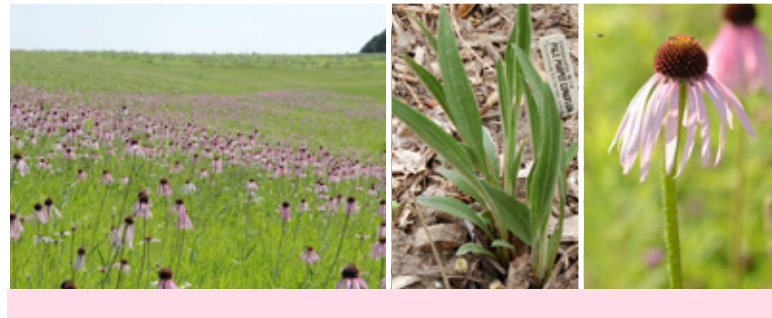
Baptisia australis
Blue False Indigo
h: 3-4ft / w: 3-4ft



Helianthus maximiliani
Maximilian Sunflower
h: 3-10ft / w: 2-4ft



Perovskia atriplicifolia
Russian Sage
h: 3-5ft / w: 2-4ft



Echinacea pallida
Pale Purple Coneflower
h: 4-5ft / w: 2-3ft



Liatris spicata 'Alba'
Blazing Star
h: 2-4ft / w: 1-2ft



Solidago ohioensis
Ohio Goldenrod
h: 3-4ft / w: 2-3ft



Eryngium yuccifolium
Rattlesnake Master
h: 4-5ft / w: 2-3ft



Penstemon 'Dark Towers'
Dark Towers Beardtongue
h: 3ft / w: 2ft



Solidago speciosa
Showy Goldenrod
h: 2-3ft / w: 2-3ft



Gaura lindheimeri
Lingheimer's Beeblossom
h: 3-5ft / w: 2-3ft



Penstemon palmeri
Palmer's Beardtongue
h: 4-5ft / w: 2ft



Phlomis tuberosa
Jerusalem Sage
h: 3-5ft / w: 2-3ft

GARDENS - REVISED PLANT PALETTE

FLOWERING PERENNIALS

MEDIUM / DECIDUOUS



Achillea 'Sassy Summer Sangria'
Yarrow
h: 2-3 ft / w: 2-3 ft



Agastache 'Blue Fortune'
Giant Hyssop
h: 2-3 ft / w: 1-2 ft



Echinacea purpurea
Purple Coneflower
h: 2-4 ft / w: 1-2 ft



Eryngium x zabelii 'Big Blue'
Sea Holly
h: 3-4ft / w: 2-3ft



Symphyotrichum oblongifolium
Aromatic Aster
h: 1-3ft / w: 1-3ft



Ratibida columnifera
Mexican Hat Plant
h: 1-3 ft / w: 1-3 ft



Salvia nemorosa 'Caradonna'
Caradonna Salvia
h: 2-3 ft / w: 3 ft



Salvia farinacea 'Henry Duelberg'
Henry Duelberg Salvia
h: 3 ft / w: 3 ft

MEDIUM / EVERGREEN



Salvia greggii 'Furman's Red'
Furman's Red Autumn Sage
h: 2-3ft / w: 2-3ft



Salvia greggii 'Texas Wedding'
White Autumn Sage
h: 2-3ft / w: 2-3ft



Sedum x 'Matrona'
Matrona Stonecrop
h: 2 ft / w: 2 ft

GARDENS - REVISED PLANT PALETTE